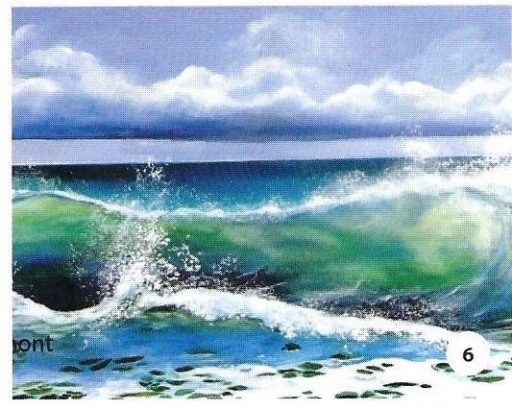


MAHURANGI 2025 ARTIST'S STUDIO TRAIL

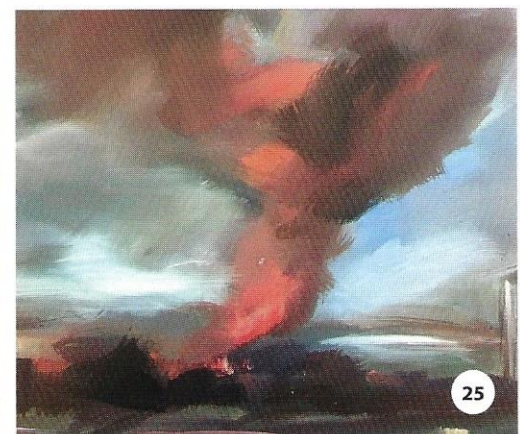
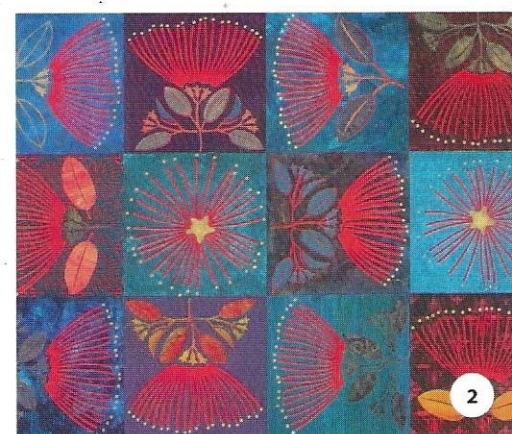
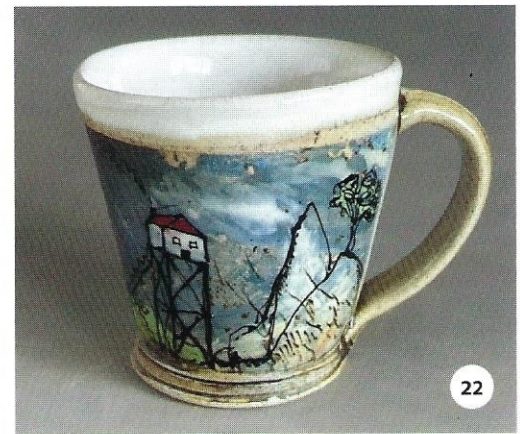
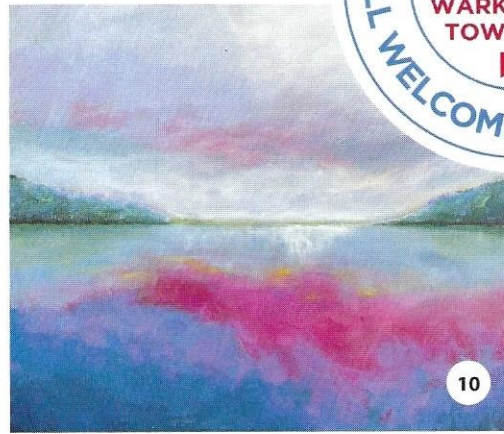


THURSDAY 30th JANUARY – SUNDAY
9th FEBRUARY 2025 > FEATURING
48 ARTISTS OVER 25 VENUES >

FREE TRAIL GUIDE



OPENING NIGHT
THURSDAY
30th JANUARY
2025 6-8PM
WARKWORTH
TOWNHALL
ALL WELCOME • FREE EVENT



ARTIST	ARTIST INFORMATION	VENUE #	VENUE LOCATION	VENUE INFORMATION	TOILETS	JANUARY - FEBRUARY 2025									
						FRI 31ST	SAT 1ST	SUN 2ND	MON 3RD	TUE 4TH	WED 5TH	THU 6TH	FRI 7TH	SAT 8TH	SUN 9TH
KARENA DE PONT 027 631 3083	PAINTER & SCULPTOR - This year, Karena is presenting her working studio for visitors to watch her process of making her Burnt Offerings abstract works on cedar board panels or her painted bamboo earth sticks.	1	Whare Koa 27 Opahi Bay Rd MAHURANGI WEST	Onsite or beachfront parking. Studio accessed by steep garden path and some steps.	No	✓	✓	✓	✗	✓	✓	✗	✓	✓	✓
PHILIPPA STICHBURY 027 929 4849	PAINTING / MIXED MEDIA / CERAMICS & TEXTILES - Philippa works as a WOW designer, a painter and with ceramics, collage and quilt design. She is often inspired by nature.	2	60A Cowan Bay Rd WARKWORTH	Follow the drive right down to the bottom. Plenty of parking and easy access to studio.	Yes	✓	✓	✓	✓	BY APPT	✓	✓	✓	✓	✓
MARK LEWINGTON 021 425 477	MIXED MEDIA ARTIST - Inspired by life and all its infinite wonder, Mark enjoys working with different materials to create a diverse range of unique works.	3	19 Kaponga Lane KAIPARA FLATS Warkworth	Lots of parking on the roadside around driveway. Sloped gravel driveway down to studio space. Assistance for those who need it.	No	✓	✓	✓	✓	10-1	✓	✓	✓	✓	✓
ALEXIS WATERHOUSE 027 628 7007	CERAMICS - Alexis works primarily in ceramics making wheel-thrown vessels and hand-built sculptures. She also uses glass and wood and re-purposes found materials to create sculptures.	4	365 Old Kaipara Rd KAIPARA FLATS Warkworth	Plenty of parking, flat, gravel driveway. Small step up into garage. Wheelchair accessible.	Yes	✓	✓	✓	✓	✓	✓	✓	✓	✓	✓
VIVIANNE RANEY 021 221 5605	ACRYLIC PAINTING - Vivienne's paintings are inspired by the beauty of Mahurangi Peninsula, often abstracted versions of reality. She experiments with different styles and mediums.					✓	✓	✓	✓	✓	✓	✓	✓	✓	✓
ALAN RANEY 021 972 639	WOOD TURNING - Alan uses mainly native New Zealand timbers to create pieces that enhance the natural beauty of the wood.					✓	✓	✓	✓	✓	✓	✓	✓	✓	✓
ELVIRA BAKKER 021 0262 5166	CERAMICS & MODERN PAINTING - Elvira enjoys all forms of pottery, Domestic mugs and platters to rustic garden bird baths and sculptures. Also, she paints and draws.	5	13 Blue Gum Drive WARKWORTH	Long steep drive, some parking at top of drive giving flat access to studio. Reverse to turning area. Plenty of road parking.	Yes	✓	✓	✓	✓	✓	✓	✓	✓	✓	✓
JOY ZALOUM 021 156 8733	CERAMICS - Joy uses wheel work and hand building techniques to create fun, decorative planters, clay balls and domestic ware. Her work explores the use of oxides, clay marbling and colour.					✓	✓	✓	✓	✓	✓	✓	✓	✓	✓
LILLIAN FROMONT 022 677 4412	ACRYLIC PAINTING - Lillian is passionate about her family, art and nature. When she paints the world of nature she feels at one with nature itself. This is definitely her 'Happy Place'!	6	7A Wech Drive WARKWORTH	Please park on road and walk down drive, signs will indicate access. Person with reduced mobility can park at bottom of drive, which is moderately steep.	Yes	✓	✓	✓	✓	✓	✓	✓	✓	✓	✓
SONJA ROSE	PAINTER - Sonja is primarily interested in painting the figure and face. She likes to observe people - their complexities compel her to paint what she sees beneath.	7	14 Belvedere Place WARKWORTH	Please park on the road. The driveway is between numbers 8 and 11 - walk down. Flat concrete driveway; easy walk down.	No	✓	✓	✓	✓	✓	✓	✓	✓	✓	✗
CLAIRE ERICA 021 155 8614	NZ BIRD ARTIST - Claire Erica paints timeless statement pieces in oil paints on canvas with exquisite detail.	8	1 Motiti Street WARKWORTH	Street parking. Ramp available.	No	✓	✓	✓	✓	✓	✓	✓	✓	✓	✓
DESIREE ALEXANDRE 021 155 8614	MIXED MEDIA ARTIST - Desiree's art is inspired by life experiences and her approach to life which is to be positive and to uplift others with her work and art lessons.	9	Women's Centre Rodney 10 Morpeth Street WARKWORTH	Some parking in driveway & road. Stairs at front entrance. Wheelchair access at back of house if you go up the path and through the side gate.	No	✓	✓	✓	✓	✓	✓	✓	✓	✓	✓
YVONNE GRAY	PAINTER & PRINTMAKER - Yvonne uses a variety of tools and media to create impressions of places, people and emotions in her art, inviting viewers to form a lasting connection.	10	TRAIL CENTRAL TOWN HALL 2 Alinwick St WARKWORTH	On-street and Town Hall parking. Mobility access and toilets onsite.	Yes	✓	✓	✓	✓	✓	✓	✓	✓	✓	✓
TRISH SINCLAIR	SEMI-ABSTRACT SEASCAPE PAINTER - Trish works in oils creating a casual soft expression of the seascapes and sky she loves. Her favourite palette is Nordic greys with a dash of bright colour.					✓	✓	✓	✓	✓	✓	✓	✓	✓	
VIVIANNE PATERSON	CERAMICS - Vivienne's ceramics capture the bright colours of nature - flowers & native birds, fired in electric or raku kilns and displayed on driftwood or upcycled copper.					✓	✓	✓	✓	✓	✓	✓	✓	✓	✓
TANYA McCABE 022 011 8725	ABSTRACT PAINTER - Tanya creates colour, quirky and contrast between colours, shapes and forms.					✓	✓	✓	✓	✓	✓	✓	✓	✓	✓

WATERBURY

ARTIST	ARTIST INFORMATION	VENUE #	VENUE LOCATION	VENUE INFORMATION	TOILETS	FRI 31ST	SAT 1ST	SUN 2ND	MON 3RD	TUE 4TH	WED 5TH	THU 6TH	FRI 7TH	SAT 8TH	SUN 9TH		
MAUREEN ROKE 027 474 0001	WATERCOLOUR & MIXED MEDIA ARTIST - Maureen is a watercolourist and mix media artist. Favourite themes for her are semi-abstract seascapes and landscapes.	19	STUDIO 22 22 Muncaster Road SNELLS BEACH	Easy access. Some parking outside studio up driveway or street parking available.	Yes	✓	✓	✓	✓	✓	✓	✓	✓	✓	✓		
JO-ANN FARNELL 022 350 5706	MULTIDISCIPLINARY ARTIST - Jo-ann likes to explore the boundaries and create works that are unique, giving an appreciation of the beauty that surrounds us.					✓ 2-4 and 6-8 Studio Open Event	✓	✓	✓	✓	✓	✓	✓	✓	✓	✓	✓
JONATHAN BOURLA 021 0236 1376	FINE ART PHOTOGRAPHY - Jonathan Bourla is a fine art black & white photographer living in Snells Beach. Drawn to details and textures, his portfolios include Martins Bay and historic houses.					✓	✓	✓	✓	✓	✓	✓	✓	✓	✓	✓	✓
JULIE BOURLA 022 480 3022	PAINTER - After a career in Graphic Design, Julia paints in acrylics and watercolour, inspired by local landscape features.	20	129 Ridge Road SCOTTS LANDING Mahurangi East	Down drive, plenty of turning and parking. One step up into studio. Level area from car parking.	Yes	✓	✓	✓	✓	✓	✓	✓	✓	✓	✓		
SHELLY GRAY 027 376 4144	BESPOKE JEWELLERY - Shelly Gray, Creative Community Artist will be running fun free Upcycle workshops during the trail. Her bespoke jewellery will also be on display for sale.					✓	✓	✓	✓	✓	✓	✓	✓	✓	✓	✓	✓
GLENDA HOPKINS 027 235 6868	CONTEMPORARY & INTUITIVE PAINTER - Inspired by nature, colour and a desire to create pieces that give pause and pleasure in a busy world. Art is not just for viewing - it is to be experienced.	21	161 Sharp Road Matakana WARKWORTH	Driveway entrance 200+ metres from studio. Plenty of parking. 2 low steps to gallery but alternative flat back entrance.	Yes	✓	✓	✓	✓	✓	✓	✓	✓	✓	✓		
KATHY STEVENSON 021 126 0465	FLAX WEAVER - Kathy's inspiration comes from what surrounds her, namely plants, giving shape and design. Her flax weaving pieces are woven queen palm pods, bodices and wall hangings.					✓	✓	✓	✓	✓	✓	✓	✓	✓	✓	✓	✓
PAULINE GOUGH 021 183 2738	ACRYLIC PAINTING & MIXED MEDIA - Contemporary artworks rendered with bold brushstrokes. Pauline's aim is to paint intuitively and she works quickly to maintain a fresh result.	22	42 Green Road MATAKANA	Park on the road or in the drive of the 2nd entrance of property. There are stairs down to the studio.	Yes	✓	✓	✓	✓	✓	✓	✓	✓	✓	✓		
PAMELA HARLAND 021 114 7878	ACRYLIC PAINTING - Pamela uses creative visualisations for transformation in her client work. This is reflected in her unique, intuitive style of colourful images which encourage self-healing.					✓	✓	✓	✓	✓	✓	✓	✓	✓	✓	✓	✓
SARAH JOHNS 021 210 2532	JEWELLERY - With heartfelt connection to the ocean, Sarah's jewellery reflects beauty in nature. With an award winning profile, her unique designs are handmade and finished to perfection.	23	Vitality Therapies 102 Omaha Flats Rd MATAKANA	Come up the long drive and follow the studio signs to park directly outside the studio (a big green shed). Accessible to all.	Yes	✓	✓	✓	✓	✓	✓	✓	✓	✓	✓		
BRENDAN ADAMS 022 058 5300	CERAMICS & MIXED MEDIA ARTIST - Brendan merges his painting background with ceramics, using vibrant colours and graphic detail in his pottery.					✓	✓	✓	✓	✓	✓	✓	✓	✓	✓	✓	✓
LOUISE BROADBENT 027 228 6038	CERAMICS - Louise makes both functional and non functional pots creating effects with slips and ash glaze in a high fire gas reduction kiln.	24	Kotare Studio 865 Takatu Road TAWHARANUI PENINSULA	Take the first driveway on the left after Tawharanui Lodge, continue for 700m up the driveway to the gate marked Kotare House. Parking and turning available.	Yes	✓	✓	✓	✓	✓	✓	✓	✓	✓	✓		
RACHEL WATERHOUSE	CERAMICS - Rachel Waterhouse created Pakiri Clay, a small business born from her passion for ceramics. Rachel's unique, stunning designs combine function and form.					✓	✓	✓	✓	✓	✓	✓	✓	✓	✓	✓	✓
NICOLA BEDFORD 022 605 1619	MIXED MEDIA ARTIST - Nicola's resin and acrylic artworks are vibrant and whimsical, with a focus on flora/fauna. She facilitates workshops sharing her techniques alongside the therapeutic benefits of engaging in creative processes.	25	Foundation Gallery 17e Totara Road LEIGH	Plenty of on-street parking. Mobility access and toilets onsite.	Yes	✓	✓	✓	✓	✓	✓	✓	✓	✓	✓		
ALYSN MIDGELOW-MARSDEN 022 318 6750	MULTI-DISCIPLINARY TEXTILES - Alysn is an energiser and inspirer in art making and teaching. Her works are compelling forms, inviting you to explore your own experiences. They encompass textile, sculpture and installation.					✓	✓	✓	✓	✓	✓	✓	✓	✓	✓	✓	✓
HILLARY AUSTEN	PAINTER - With a career spanning more than 40 years, Hillary creates emotionally charged & thought provoking landscapes & still lifes. Proceeds from work sold will go to the gallery.	25	Foundation Gallery 17e Totara Road LEIGH	Plenty of on-street parking. Mobility access and toilets onsite.	Yes	✓	✓	✓	✓	✓	✓	✓	✓	✓	✓		
JOHN WRIGHT 021 207 2793	PAINTING AND DRAWING - John's often surreal paintings and drawings come in the form of landscapes, cartoons and more.					✓	✓	✓	✓	✓	✓	✓	✓	✓	✓	✓	✓

LEARN MORE ABOUT OUR ARTISTS AT MAHURANGIARTISTNETWORK.COM

MAHURANGI 20 ARTIST'S STUDIO TRAIL 25 WORKSHOPS

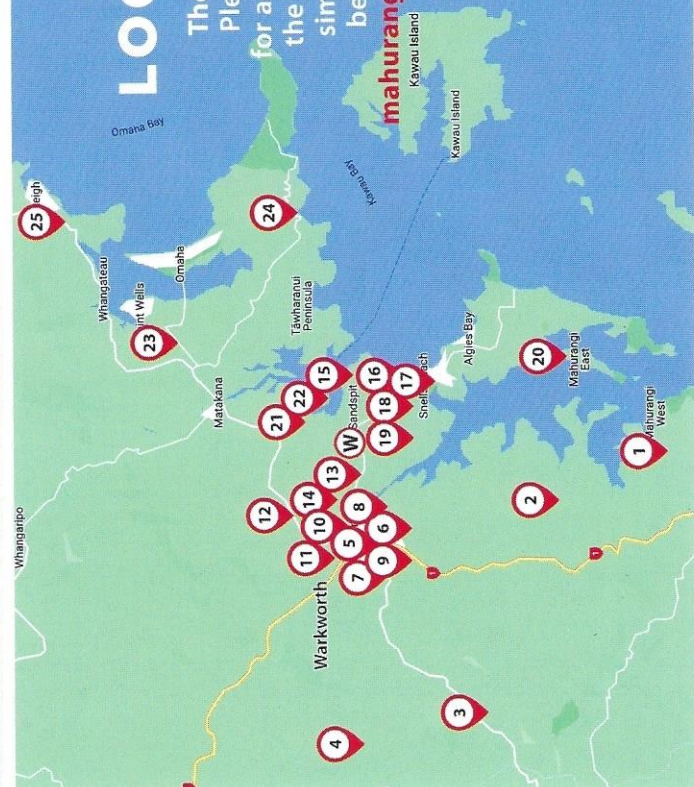
These interactive sessions provide a platform for artists, both seasoned and emerging, to share their creative expertise with the community. Participants have the opportunity to explore various artistic mediums, learn new techniques, and gain hands-on experience in crafting their own masterpieces! Workshops hosted along the art trail foster a sense of camaraderie and collaboration among art enthusiasts. From painting and sculpture and pottery, these workshops encourage individuals of all ages and skill levels to discover and nurture their passion for the arts.

VENUE	ARTIST	WORKSHOP TITLE	WORKSHOP CONTENT	DATES	TIMES	DROP IN	BOOKING INFORMATION	COST
TRAIL CENTRAL Warkworth Town Hall 2 A Inwick St Warkworth	Sandra Mather	CREATIVE CLAY	An immersion into handbuilding with clay, using different techniques and then using underglazes so they can have a colourful lasting reminder of the Mahurangi Artists Trail.	6th 1st, 6th & 7th February	10.30-12.30pm	Yes	20 places per workshop, first come first served. If you wish to have your piece glazed it will be \$10.00.	FREE
	Noelia Souza	POSCA AND JUICE	Like Sip and Paint, but for young artists! Painting and colouring with Posca pens and Resene paint. Create a bright, fun canvas to take away.	31st January & 2nd, 5th February	10.30-12.30pm	Yes	20 places per workshop, first come first served.	FREE
	Sharlene Hasler & Tanya McCabe	CREATIVE RE-VIBE	Ignite your joyful, playful spark and see artistic opportunity in everyday things. Take home 'Revived' keepsakes, mementos and bric-a-brac as a truly meaningful mixed media art-piece to enjoy.	3rd, 6th & 8th February	10.30-12.30pm	Yes	20 places per workshop, first come first served.	FREE
Womens Centre Rodney 10 Morpeth St Warkworth	Julie Beaumont	INTRODUCTION TO FUSED GLASS	Create a fused glass tile and learn what is possible with fused glass techniques.	2nd February	4.15pm	No	10 places only. Book and pay in advance. Contact juliebeaumontnz@gmail.com for details.	\$65.00 per person
	Desiree Alexandre	FUN WITH STENCILS	An opportunity for all to create and develop artworks using stencils. Whatever your age or skill level, stencils can be used and personalised to create your own art without feeling the need to 'draw' - a great way to remove any hang ups about your own expressive powers.	1st, 2nd, 7th & 8th February	Session 1: 10-11.20am and Session 2: 11.40-1pm	Yes	12 places per workshop, first come first served.	FREE
W Less Waste 55 Lawrie Road Snells Beach	Shelly Gray	CREATIVE UPCYCLED ART	Transform recycled materials into creative masterpieces! Blend artistry with sustainability and leave with new skills, appreciation of materials and an artwork to treasure.	1st & 8th February	10.30-1.00pm	No	Book in advance at www.tinkerdesigns.co.nz	FREE

VENUE LOCATIONS

These are approximate. Please refer to the table for addresses or, to access the live google trail map, simply scan the QR code below or go to this link:

mahurangiartistsnetwork.com/art-trail-2025



MAHURANGI 20 ARTIST'S STUDIO TRAIL 25

The Mahurangi Artist's Studio Trail brings together artists from many disciplines, schools, and techniques. This is your chance to see the working areas of local artists and talk to them about their ideas, watch amazing skills in action, buy special pieces of art or be inspired to do something for yourself. Visiting a studio or workspace gives a special insight into the creative process you wouldn't have at a gallery or exhibition and some venues are offering activities for you to take part in.



Follow us on facebook and Instagram: @MahurangiArtistsTrail @mahurangiartist Thank you to our amazing sponsors:



**LEARN MORE ABOUT OUR ARTISTS AT
MAHURANGIARTISTNETWORK.COM**

